



FACULTY AND STAFF



Overleaf: Modern impression of a seal showing a goddess at the gate and the bull of heaven; before the goddess is a deeply cut crescent and behind her a palm tree; over the bull is a gate; (above) Serpentine cylinder seal with modern impression. Early Dynastic-Akkadian, ca. 2900–2150 BC. Iraq, Kish, Mound III, Level 2, Grave 4. 3.3 × 2.1 cm. OIM A535. D. 019007. Photos by Anna Ressler

FACULTY AND STAFF OF THE ORIENTAL INSTITUTE

July 1, 2013–June 30, 2014

EMERITUS FACULTY

Lanny Bell, Associate Professor Emeritus of Egyptology

Robert D. Biggs, Professor Emeritus of Assyriology
r-biggs@uchicago.edu, 702-9540

John A. Brinkman, Charles H. Swift Distinguished Service Professor Emeritus of Mesopotamian
History
j-brinkman@uchicago.edu, 702-9545

Miguel Civil, Professor Emeritus of Sumerology
m-civil@uchicago.edu, 702-9542

Peter F. Dorman, Professor Emeritus of Egyptology
p-dorman@uchicago.edu

Walter T. Farber, Professor Emeritus of Assyriology
w-farber@uchicago.edu, 702-9546

Gene B. Gragg, Professor Emeritus of Near Eastern Languages
g-gragg@uchicago.edu, 702-9511

Harry A. Hoffner Jr., John A. Wilson Professor Emeritus of Hittitology; Co-editor, Chicago Hittite
Dictionary Project
hitt@uchicago.edu, 702-9527

Matthew W. Stolper, John A. Wilson Professor Emeritus of Assyriology, Director, Persepolis
Fortification Archive Project
m-stolper@uchicago.edu, 702-9553

Edward F. Wente, Professor Emeritus of Egyptology
e-wente@uchicago.edu, 702-9539

K. Aslihan Yener, Associate Professor Emeritus of Archaeology

FACULTY

Fred M. Donner, Professor of Near Eastern History
f-donner@uchicago.edu, 702-9544

McGuire Gibson, Professor of Mesopotamian Archaeology
m-gibson@uchicago.edu, 702-9525

FACULTY AND STAFF

- Petra Goedegebuure, Assistant Professor of Hittitology; Junior Editor, Chicago Hittite Dictionary Project
pgoedegebuure@uchicago.edu, 702-9550
- Norman Golb, Ludwig Rosenberger Professor of Jewish History and Civilization
n-golb@uchicago.edu, 702-9526
- Rebecca Hasselbach-Andee, Associate Professor of Comparative Semitics
hasselb@uchicago.edu, 834-3290
- Janet H. Johnson, Morton D. Hull Distinguished Service Professor of Egyptology; Editor, Chicago Demotic Dictionary Project
j-johnson@uchicago.edu, 702-9530
- Walter E. Kaegi, Professor of Byzantine-Islamic Studies
kwal@uchicago.edu, 702-8346, 702-8397
- Nadine Moeller, Assistant Professor of Egyptian Archaeology
nmoeller@uchicago.edu, 834-9761
- Brian P. Muhs, Associate Professor of Egyptology
bpmuhs@uchicago.edu, 702-9533
- Dennis G. Pardee, Henry Crown Professor of Hebrew Studies
d-pardee@uchicago.edu, 702-9541
- Richard Payne, Neubauer Family Assistant Professor
repayne@uchicago.edu, 834-9897
- Robert K. Ritner, Professor of Egyptology
r-ritner@uchicago.edu, 702-9547
- Martha T. Roth, Chauncey S. Boucher Distinguished Service Professor of Assyriology; Director and Editor-in-charge, Chicago Assyrian Dictionary Project; Dean, Division of the Humanities
mroth@uchicago.edu, 702-9551
- David Schloen, Associate Professor of Syro-Palestinian Archaeology
d-schloen@uchicago.edu, 702-1382
- Gil J. Stein, Professor of Near Eastern Archaeology; Director, Oriental Institute
gstein@uchicago.edu, 702-4098
- Theo P. J. van den Hout, Professor of Hittite and Anatolian Languages; Executive Editor, Chicago Hittite Dictionary Project; Chairman, Department of Near Eastern Languages and Civilizations
tvdhout@uchicago.edu, 834-4688, 702-9527
- Christopher Woods, Associate Professor of Sumerology; Editor, *Journal of Near Eastern Studies*
woods@uchicago.edu, 834-8560

RESEARCH ASSOCIATES

- Abbas Alizadeh, Senior Research Associate, Iranian Prehistoric Project
a-alizadeh@uchicago.edu, 702-9531
- Annalisa Azzoni, Research Associate, Persepolis Fortification Archive Project
annalisa.azzoni@vanderbilt.net
- Richard H. Beal, Senior Research Associate, Chicago Hittite Dictionary Project
r-beal@uchicago.edu, 702-9527
- Scott Branting, Research Associate (Assistant Professor); Director, Center for Ancient Middle Eastern Landscapes (CAMEL)
branting@uchicago.edu, 834-1152
- Vanessa Davies, Meteor Project
jmevans@uchicago.edu
- Elsbeth R. M. Dusinberre, Persepolis Fortification Archive Project
- Jean Evans, Research Associate, Nippur Project
jmevans@uchicago.edu
- Gertrud Farber, Research Associate, Sumerian Lexicon Project
g-farber@uchicago.edu, 702-9548
- Mark Garrison, Research Associate, Persepolis Fortification Archive Project
mgarriso@trinity.edu
- François Gaudard, Research Associate; Associate Editor, Chicago Demotic Dictionary Project;
Co-editor, Mummy Label Database Project
fgaudard@uchicago.edu, 702-9528
- Ronald Gorny, Research Associate, Alishar Regional Project
rlg2@uchicago.edu, 702-8624
- Jack Green, Research Associate, Chief Curator, Museum
jdmgreen@uchicago.edu, 702-9863
- Lisa Heidorn, Research Associate, Oriental Institute Nubian Expedition
lheidorn@uchicago.edu
- Wouter Henkelman, Research Associate, Persepolis Fortification Archive Project
wouterhenkelman@gmail.com
- Carrie Hritz, Research Associate, Zeidan Project, Girsu Project
- W. Raymond Johnson, Research Associate (Associate Professor); Field Director, Epigraphic Survey
wr-johnson@uchicago.edu, 834-4355
- Charles E. Jones, Research Associate, Persepolis Fortification Archive Project
cejo@uchicago.edu
- Morag M. Kersel, Research Associate, Galilee Prehistory Project
mokersel@uchicago.edu, 702-0086

FACULTY AND STAFF

Mark Lehner, Research Associate, Giza Plateau Mapping Project
MarkLehner@aol.com

Lec Maj, Research Associate, Persepolis Fortification Archive Project
lec@uchicago.edu

Gregory Marouard, Research Associate, Tell Edfu Project
marouardg@uchicago.edu, 834-4270

Gregory McMahon, Research Associate, Çadır Höyük Project

J. Brett McClain, Research Associate; Senior Epigrapher, Epigraphic Survey
jbmccclai@uchicago.edu, 702-9524

Carol Meyer, Research Associate, Bir Umm Fawakhir Project
c-meyer@uchicago.edu

Artur Obluski, Research Associate, Qasr el-Wizz Publication Project
aobluski@uchicago.edu

Rana Özbal, Research Associate, Tell Kurdu Project

Hratch Papazian, Research Associate
hratch@uchicago.edu

Marina Pucci, Research Associate, Chatal Höyük Publication Project

Clemens D. Reichel, Senior Research Associate, Diyala Project, Hamoukar
cdreiche@uchicago.edu, (416) 586-7938

Yorke Rowan, Research Associate, Ancient Studies; Director, Galilee Prehistory Project
ymrowan@uchicago.edu, 702-0086

Moain Sadeq, Research Associate, Khirbat al-Mafjar Project
msadeq@uchicago.edu

Oğuz Soysal, Senior Research Associate, Chicago Hittite Dictionary Project
o-soysal@uchicago.edu, 702-3644

Geoffrey D. Summers, Research Associate, Kerkenes Project
summers@metu.edu.tr

Emily Teeter, Research Associate; Special Exhibits Coordinator, Museum
eteeter@uchicago.edu, 702-1062

Joanna Then-Obluska, Research Associate, Oriental Institute Nubian Expedition
jthenobluska@uchicago.edu

Raymond Tindel, Research Associate
r-tindel@uchicago.edu

Tasha Vorderstrasse, Research Associate, Islamic Archaeology Publication Project
tkvorder@uchicago.edu

John Z. Wee, Provost's Career Enhancement Postdoctoral Scholarship
johnwee@uchicago.edu, 702-7497

Donald Whitcomb, Research Associate (Associate Professor), Islamic and Medieval Archaeology
d-whitcomb@uchicago.edu, 702-9530

Magnus Widell, Research Associate
widell@uchicago.edu

Tony Wilkinson, Research Associate, MASS Project
t.j.wilkinson@durham.ac.uk

Bruce B. Williams, Research Associate
bbwillia@uchicago.edu

Karen L. Wilson, Research Associate
k-wilson@uchicago.edu

Richard Zettler, Research Associate
rzettler@sas.upenn.edu

STAFF

Mohamed Abo El Makarem, Conservator, Epigraphic Survey
702-9524

Keli Alberts, Artist, Epigraphic Survey
kelialberts@hotmail.com

Susan Allison, Assistant Registrar, Museum
srallison@uchicago.edu, 702-3513

Nahed Samir Andraus, Conservator, Epigraphic Survey

Alain Arnaudies, Digital Archives Database, Epigraphic Survey
arnaudies@laposte.net

Emmanuelle Arnaudies, Digital Archives Database, Epigraphic Survey
emmanuellearnaudies@free.fr

Jason Barcus, Visitor Services and Security Manager
jbarcus@uchicago.edu, 702-5112

Denise Browning, Manager, Suq
d-browning1@uchicago.edu, 702-9509

Marie Bryan, Librarian, Epigraphic Survey
mebryan@usa.net, 702-9524

Rebecca Cain, Assistant Editor, Publications Office
rebeccacain@uchicago.edu, 702-5967

Steven Camp, Executive Director
shcamp@uchicago.edu, 702-1404

Dennis Campbell, Research Project Professional, Persepolis Fortification Archive Project

D'Ann Condes, Financial Manager
dcondes@uchicago.edu, 834-9886

FACULTY AND STAFF

- Simona Cristanetti, Assistant Conservator, Persepolis Fortification Archive Project
cristanetti@uchicago.edu, 702-9519
- Laura D'Alessandro, Head, Conservation Laboratory, Museum
lada@uchicago.edu, 702-9519
- Margaret De Jong, Senior Artist, Epigraphic Survey
mdejong98ch@hotmail.com, 702-9524
- Christina Di Cerbo, Epigrapher/Artist, Epigraphic Survey
tinadicerbo@hotmail.com, 702-9524
- Michael T. Fisher, Field Director, NMA Project, Kabul
mtf@uchicago.edu
- Terry Friedman, Volunteer Manager, Public Education
et-friedman@uchicago.edu, 702-1845
- Susan Geshwender, Program Associate, Public Education
geshwender@uchicago.edu, 702-1845
- Christian Greco, Epigrapher, Epigraphic Survey
christian.greco@museoegizio.it
- Moriah Grooms-Garcia, Youth and Family Program Coordinator, Public Education
mggarcia@uchicago.edu, 702-9507
- Samir Guindy, Administrator, Epigraphic Survey
samsgu1952@hotmail.com
- Lotfi Hassan, Conservator, Epigraphic Survey
hslotfi@yahoo.it, 702-9524
- Catherine Heim, Research Specialist, NMA Project, Kabul
- James B. Heidel, Architect/Artist, Epigraphic Survey
heidel@uchicago.edu, 702-9524
- Anait Helmholz, Librarian, Epigraphic Survey
anaith@succeed.net
- Frank Helmholz, Stonemason, Epigraphic Survey
frankhelmholz8@gmail.com, 702-9524
- Jason Herrmann, Research Project Professional, Persepolis Fortification Archive Project
herrmann@uchicago.edu
- Felix Höflmayer, Postdoctoral Scholar
fhoflmayer@unichicago.edu, 702-7497
- Jean Jacquet, Architect Consultant, Epigraphic Survey
jean-jacquet@bluewin.ch, 702-9524
- Richard Jasnow, Epigrapher Consultant, Epigraphic Survey
rjasnow@jhu.edu, 702-9524

Hiroko Kariya, Conservator, Epigraphic Survey
hkariya@aol.com, 702-9524

Catherine Kenyon, Head, Public Education and Outreach
ckenyon@uchicago.edu, 834-5401

Jen Kimpton, Epigrapher, Epigraphic Survey
jenkimpton@hotmail.com, 702-9524

Yarko Kobylecky, Photographer, Epigraphic Survey
museumphoto@hotmail.com, 702-9524

John A. Larson, Museum Archivist, Museum
ja-larson@uchicago.edu, 702-9924

Susan Lezon, Photo Archivist and Photographer, Epigraphic Survey
suelezon@gmail.com, 702-9524

Erik Lindahl, Gallery Preparator, Museum
lindahl@uchicago.edu, 702-9516

Adam Lubin, Financial Management Assistant
alubin@uchicago.edu, 834-0451

Jill Carlotta Maher, Assistant to the Director, Epigraphic Survey
jillcarlottamaher@yahoo.com, 702-9524

Samwell Maher, Assistant Administrator, Epigraphic Survey
samwellmaher@yahoo.com, 702-9524

Massimo Maiocchi, Mellon Postdoctoral Fellow
maiocchi@uchicago.edu, 702-2589

Helen McDonald, Registrar, Museum
helenmcd@uchicago.edu, 702-9518

Miriam Müller, Postdoctoral Scholar
mmuller@uchicago.edu, 702-7497

Brittany F. Mullins, Assistant Director of Development
bfmullins@uchicago.edu, 834-9775

Carol Ng-He, K-12 and Continuing Education Program Developer, Public Education
cnghe@uchicago.edu, 702-1158

Susan Osgood, Senior Artist, Epigraphic Survey
sittsu@sover.net, 702-9524

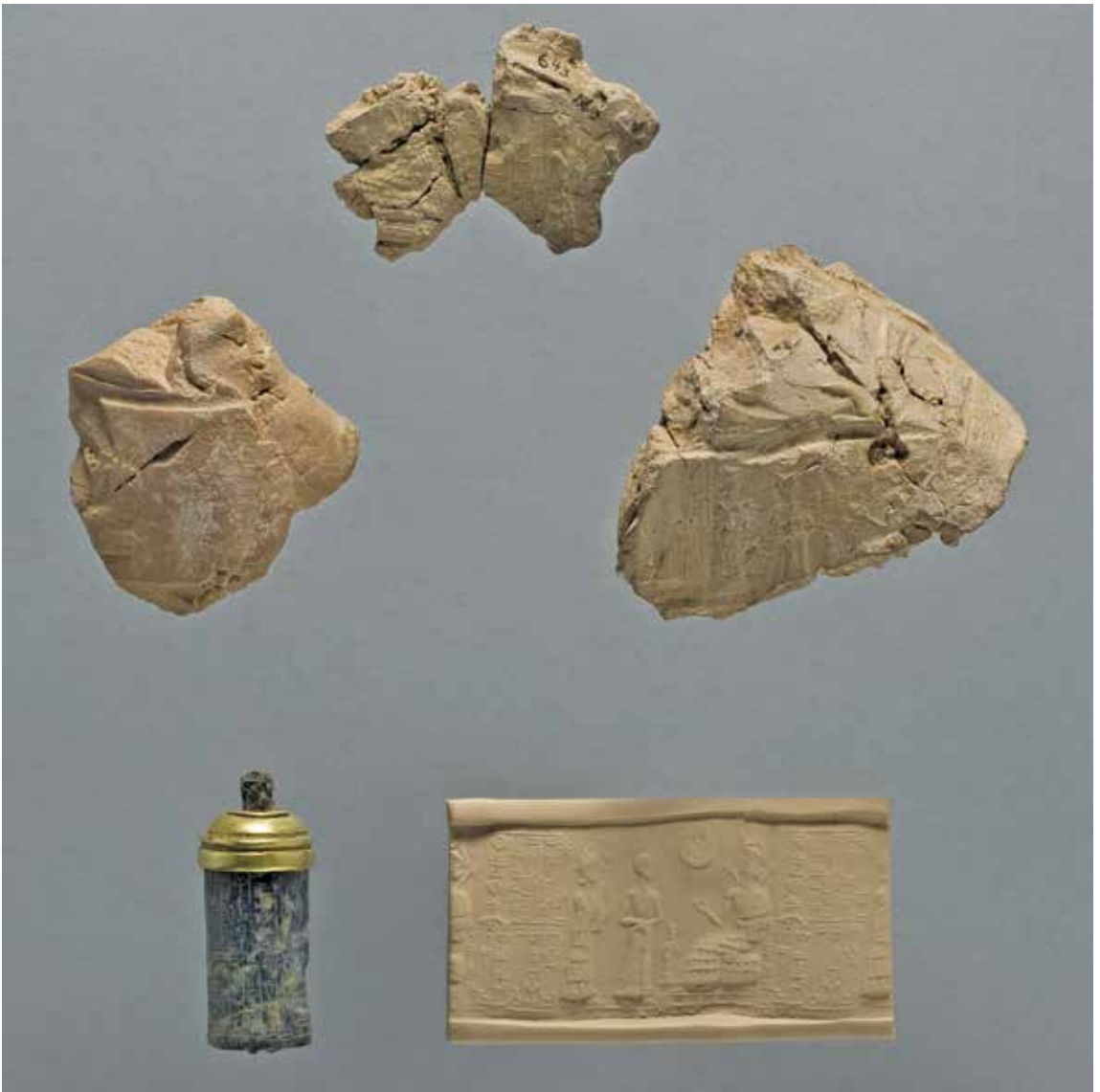
Mariana Perlinac, Assistant to the Director
oi-administration@uchicago.edu, 834-8098

Conor Power, Structural Engineer, Epigraphic Survey
conorpower@msn.com, 702-9524

Miller Prosser, Research Database Specialist, OCHRE Data Service
m-prosser@uchicago.edu

FACULTY AND STAFF

- Anna R. Ressman, Head of Photography, Museum
annaressman@uchicago.edu, 702-9517
- Seth Richardson, Managing Editor, *Journal of Near Eastern Studies*
seth1@uchicago.edu, 702-9552
- Paul Ruffin, Head, Computer Laboratory
pruffin@uchicago.edu, 702-0989
- Girgis Samwell, Chief Engineer, Epigraphic Survey
702-9524
- Essam El Sayed, Senior Accountant, Epigraphic Survey
essam_nadosb@yahoo.com, 702-9524
- Foy Scalf, Head, Research Archives
scalffd@uchicago.edu, 702-9537
- Sandra Schloen, Manager, OCHRE Data Service
sschloen@uchicago.edu
- Julia Schmied, Blockyard and Archives Assistant/Epigrapher, Epigraphic Survey
julisch@citromail.hu, 702-9524
- Leslie Schramer, Editor, Publications Office
leslie@uchicago.edu, 702-5967
- Elinor Smith, Photo Archives Registrar, Epigraphic Survey
elliesmith26@yahoo.com, 702-9524
- Amir Sumaka'i Fink, Research Project Professional, Zincirli Project
asumakai@uchicago.edu
- Keeley Stitt, Assistant Preparator (until June 30)
- Tracy Tajbl, Director of Development
ttajbl@uchicago.edu, 702-5062
- Thomas G. Urban, Managing Editor, Publications Office
turban@uchicago.edu, 702-5967
- Mónica Vélez, Curatorial Assistant, Museum (until March 19)
- Krisztián Vértes, Artist, Epigraphic Survey
euergetes@citromail.hu, 702-9524
- Amy Weber, Membership Program Manager
amyweber@uchicago.edu, 834-9777
- Alison Whyte, Associate Conservator, Museum
aawhyte@uchicago.edu, 702-9519
- Brian Zimerle, Preparator, Museum (until August 20)
-



Bilalama seal (with modern impression) and sealings. Seal: lapis lazuli and gold with remains of copper alloy rod. Isin-Larsa period, ca. 1980 BC. Purchased in Baghdad, 1931. 4.2 × 2.0 cm. OIM A7468. D. 000070. Photos by Anna Ressman. The clay sealings were excavated by the Oriental Institute in 1930/1931 at the Palace of the Rulers at Tell Asmar. As. 30:T.650, 643; As. 31:T.256

INFORMATION

The Oriental Institute
1155 East 58th Street
Chicago, Illinois 60637

Museum gallery hours:

Tuesday and Thursday to Saturday 10:00 AM–6:00 PM

Wednesday 10:00 AM–8:30 PM

Sunday 12:00 NOON–6:00 PM

Telephone Numbers (Area Code 773) and Electronic Addresses

Administrative Office, oi-administration@uchicago.edu, 702-9514
Archaeology Laboratory, 702-1407
Assyrian Dictionary Project, 702-9551
Computer Laboratory, 702-0989
Conservation Laboratory, 702-9519
Department of Near Eastern Languages and Civilizations, 702-9512
Demotic Dictionary Project, 702-9528
Development Office, 834-9775, oi-development@uchicago.edu
Director's Office, 834-8098
Epigraphic Survey, 702-9524
Executive Director, 702-1404
Facsimile, 702-9853
Hittite Dictionary Project, 702-9543
Journal of Near Eastern Studies, 702-9592
Membership Office, oi-membership@uchicago.edu, 702-9513
Museum Archives, 702-9520
Museum Information, 702-9520
Museum Office, oi-museum@uchicago.edu, 702-9520
Museum Registration, 702-9518
Public Education, oi-education@uchicago.edu, 702-9507
Publications Editorial Office, oi-publications@uchicago.edu, 702-5967
Research Archives, 702-9537
Security, 702-9522
Suq Gift and Book Shop, 702-9510
Suq Office, 702-9509
Volunteer Guides, 702-1845

World-Wide Web Address

<http://oi.uchicago.edu>
