

THE ORIENTAL INSTITUTE MUSEUM

The attendance in the Museum during 1961/62 reached 42,178, which is somewhat below the 45,172 of the previous year. However, the number of guided tours conducted by our docents and graduate students rose from 184 in 1960/61 to 305 in 1961/62.

The fate of the archeological monuments in Nubia after the completion of the High Assuan Dam still attracts much public interest, and a special exhibit of enlarged photographs and of the scale model of part of the Nile Valley with the temples of Abu Simbel are still popular with the Museum visitors.

The throngs that crowded the special exhibit of the Tutankhamun Treasures arranged jointly by the Oriental Institute and the Chicago Natural History Museum indicated the great public interest in the art and archeology of ancient Egypt. A total of 123,722 people visited the exhibit, which ran from June 15 to July 15. The exhibition included objects from the Oriental Institute and the Chicago Natural History Museum selected by Oriental Institute archeologists, who helped the staffs of both museums in arranging them.

A special exhibit of Jewish ritual art objects, obtained on loan from the Hebrew Union College-Jewish Institute of Religion, Cincinnati, was held during the month of March 1962. It proved to be of interest to the University neighborhood community as indicated by the fact that the number of visitors for March 1962 was about 1,000 above the average for the month and about 2,000 over that in February.

Of the new acquisitions in the Museum the Institute's share in the finds from the 1960/61 season in Nippur have reached Chicago and were put on special exhibition prior to their incorporation in the permanent exhibits. A charming Egyptian bas-relief of a queen or goddess of the Ptolemaic period was presented to the Institute by Mrs.

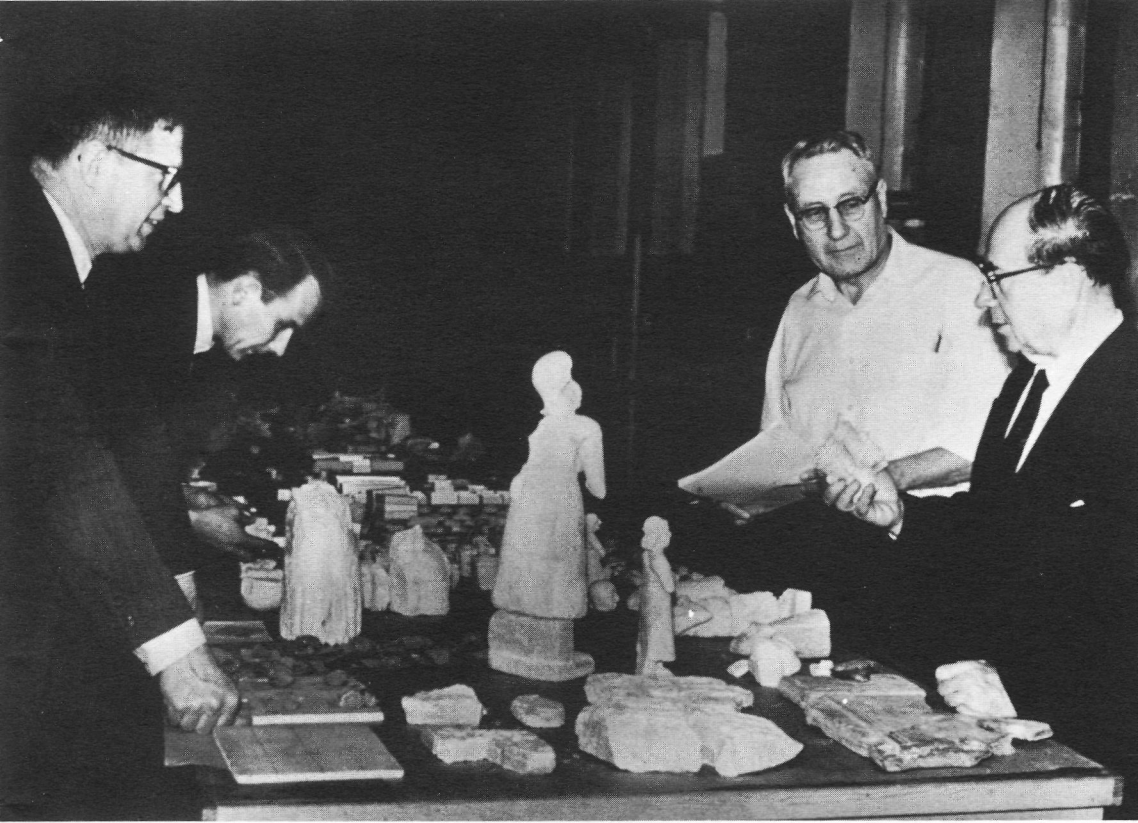


Bas-relief of queen or goddess, Ptolemaic period (332 to 30 B.C.)

Italia Blair de Soriano in memory of her mother, Mrs. Chauncey J. Blair. The study collections representing the Talish and Mazandaran regions of Iran, started in the previous year, have been augmented by purchases of some carefully selected pottery and small objects.

The Institute's share in the finds of the Nubian Expedition in the Sudan and the Archeological Reconnaissance in Iran during the winter of 1961/62 are on their way from their respective countries and will probably reach the Institute by the time this report is in print.

P. P. DELOUGAZ
Curator



Division of objects from Nippur between American Schools of Oriental Research and the Oriental Institute



Members' preview of exhibit of Treasures from the Tomb of Tutankhamun



Director and Mrs. Robert M. Adams at the preview