

MUSEUM

John Carswell**The Museum**

During the past year the museum has continued with the reorganization of its services. Apart from the difficulty of operating with a limited budget, which does not allow for innovation, there is the problem of maintaining day-to-day services (on which increasing demands are being made) while attempting to restructure them.

It is hardly an exaggeration to say that we could have done little more than maintain the status quo if we had not received outside funds. For the second year running we received a grant of \$15,000 from the Institute of Museum Services of the Department of Health, Education, and Welfare. In this highly competitive field, we were one of the 403 successful museums among the 1,714 who applied. The special advantage of this Federal grant is that it can be used for



General views of the Palestinian Gallery, looking west and east (photos by John Carswell)

M U S E U M

general operating costs, and the institution is given complete freedom to establish its own order of priorities.

The National Endowment for the Arts gave \$5,320 for the reorganization of the south wing of the basement and the provision of new storage facilities. This grant required an additional \$15,960, which was raised by the Membership Office. We are grateful to the individual members who allowed their contributions to be used for this purpose: M. Schwartz, Mr. and Mrs. Caleb Penniman, Drs. Neal and Elaine Whitman, Mr. and Mrs. Albert Droste, Ms. Joan Buckley, Mr. George Draskal, and Mrs. George Winchester.

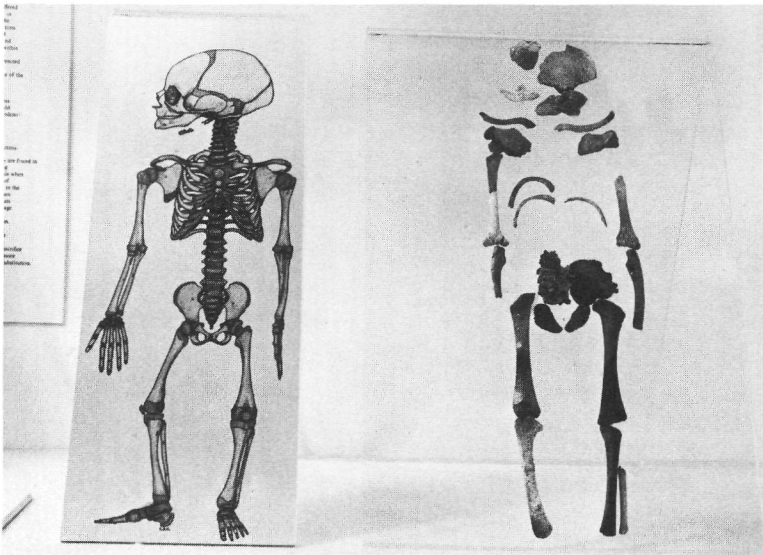
The National Science Foundation made a grant of \$10,000 towards the preservation of our photographic archives. The Arabian American Oil Company donated \$2,000, and Denoyer Geppert \$300 towards the redesign of the Suq, the museum shop. Mr. Gaylord Donnelly made a special gift of \$5,000 for the Islamic bookbinding project. Mrs. Phyllis McGrew and Mrs. Jean Brown gave \$150 to defray the cost of a special report on our security services. For the exhibition "The Excavation of Carthage," \$5,000 from the National Endowment for the Humanities was made available through the generous intervention of the Kelsey Museum, and a further \$3,100 was generated from funds raised by the Membership Office.



M U S E U M

There was an additional gift from Maurice Schwartz allocated by the Membership Office for the museum, and there were also contributions from the Illinois State Museum Society and Mrs. Eleanor Swift. We received continuing gifts from Mrs. Sophie Lalko. In all, these and other contributions came to more than \$60,000. It is obvious from this the very important part these grants and gifts have played in our work during the past year.

The major achievement of the past year was the completion of the newly designed Palestinian gallery, both as a revised setting for our Palestinian collection and as a flexible space in which temporary exhibitions of varying size can be mounted. The first of these exhibitions, "The Excavation of Carthage," ran for three months from late April to July 27, and a record audience attended the opening and Professor Stager's lecture on child sacrifice at Carthage. Apart from the bones of a burned baby, the star exhibit was undoubtedly the marble group of "Ganymede and the Eagle," on loan from the Tunisian Government. The exhibition itself, first held at the Kelsey Museum in Ann Arbor, documented the activities of the international teams of scholars working on the excavation of ancient Carthage and highlighted the Oriental Institute's share of this activity. A notable addition was a slide and tape recording explaining the excavation methods em-



A composite skeleton reconstructed from the remains of babies sacrificed in Carthage (photo by Jean Grant)

M U S E U M



Mrs. Klingeman with some of the costumes from her gift (photo by John Carswell)

ployed, an account of how things were actually dug up and processed; the musical accompaniment was appropriately excerpted from Henry Purcell's "Dido and Aeneas."

Now on permanent display in the Palestinian gallery is a selection of Islamic material, including metalwork, pottery, and manuscripts. One of the most interesting objects is the oldest known fragment of the Arabian 1001 Nights story, acquired by the Institute in 1948 and published by Nabia Abbott. This 9th century paper fragment is the oldest dated example of part of a paper book in the western world.

In the rest of the museum, the bays in the Egyptian gallery and the Star Chamber (the vestibule of the Persian Hall) were repainted and a start made on the Assyrian gallery. The Guard room was also redesigned during the summer to provide a cheerful and comfortable center for our Volunteers. The security system was revised, and a new electronic surveillance system was installed.

The museum received various gifts during the course of the year, from Mrs. Robert Mayer, Mr. Ferdinand Kramer, and the estate of Mrs. Roberta Ellis. By far the most important gift, however, was a magnificent collection of Near Eastern costumes and accessories from

M U S E U M

Mrs. Harold Klingeman of Winnetka. Mrs. Klingeman was born in Haifa, the daughter of the American Vice-Consul; her uncle, G. Schumacher, was one of the early excavators of Megiddo. The costumes, almost a hundred years old, are in a perfect state of preservation and include material from Yemen, Turkey, Iran, and Egypt as well as Syria and Palestine.

The museum loaned over fifty objects during the year, to the Lakeview Museum and the Leigh Yawkey Woodson Art Museum, and loans are in preparation for the Yeshiva University Museum, the University Museum in Philadelphia, and the Flint Institute of Arts. Many of the registration procedures have been revised, including insurance policies, loan forms, and location cards.

The number of visitors to the Museum increased from 43,814 in 1978-79 to 50,790 in the past year. A large number of visiting scholars and students made use of the archival and study collections, and demands for photographs increased heavily. The archives have been physically reorganized, to make better use of existing space. With the NSF grant, a start has been made on the preservation of our photographic archives; and William Nassau from Wilfred Laurier University, a specialist in the conservation of 19th century Near Eastern material, has agreed to act as consultant.

With the assistance of the special grant from Gaylord Donnelley, Gulnar Bosch and Guy Petherbridge were able to spend the month of January making a study of our important collection of Islamic bookbindings, acquired from Dr. B. Moritz in 1929, with a view to a major exhibition of Islamic bindings and bookmaking in 1981. In May Professor Bosch, Mr. Petherbridge, and I visited the Chester Beatty Library in Dublin, and museums in East and West Berlin to study comparative material and make arrangements for loans. A further exhibition scheduled for 1981 will feature 19th century photographs of the Near East, mostly from the studio of Felix Bonfils (1867-1907). This travelling exhibition has been organized by Eastman Kodak, and was first shown in Rochester, N.Y., in May.

While waiting to start excavating in Turkey, Leon Marfoe joined us as Museum Assistant and, apart from his normal duties, completely rewrote the Museum handbook, a new edition of which has been long overdue. This describes the five galleries in detail and provides an introduction to the history of each ancient region. The new guide and a systematic revision of the labels in the galleries should do much to improve the quality of information about the objects on display.