

MEMBERS' DOMESTIC TRAVEL PROGRAM

CLEOPATRA: THE SEARCH FOR THE LAST QUEEN OF EGYPT

The world of Cleopatra VII, lost to the sea and sand for nearly 2,000 years, has surfaced in Milwaukee for its third stop on the exhibition's world tour. The exhibit features nearly 150 artifacts from Cleopatra's time and allows visitors to experience the present-day search for the elusive queen, which extends from the sands of Egypt to the depths of the Bay of Aboukir near Alexandria. The exhibition is organized by National Geographic and Arts and Exhibitions International, with cooperation from the Egyptian Ministry of State for Antiquities and the European Institute for Underwater Archaeology (IEASM). The program will be escorted by Dr. Robert K. Ritner, Professor of Egyptology

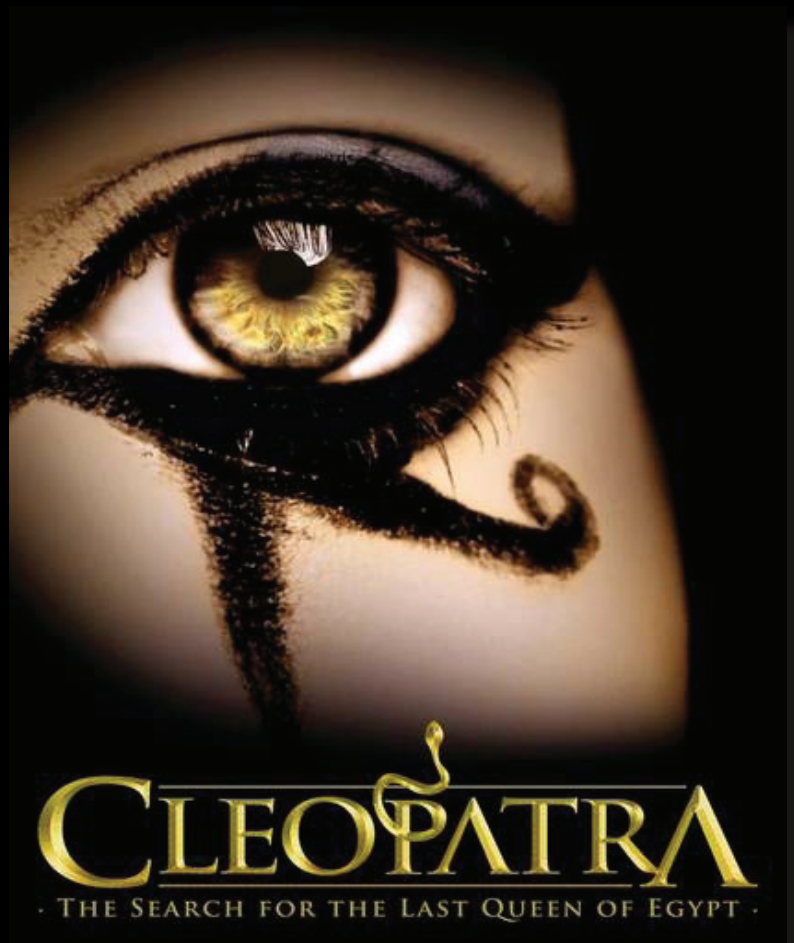
SATURDAY, JANUARY 21, 2012
Milwaukee Public Museum

9:00-11:30am	Optional Visit Museum (ticket covers the cost of museum entrance)
11:30am-12:30pm	Private Egyptian-themed lunch at the Milwaukee Public Museum
12:30-1:30pm	Lecture in the Garden Gallery by Dr. Robert K. Ritner
1:45-4:30pm	Visit the Exhibit and Audio Tour

Cost for Member: \$95
Cost for Non-Member: \$145

Included: Admission to the Milwaukee Public Museum and the exhibit with audio tour, special Egyptian-themed lunch at the Milwaukee Public Museum, lecture, all taxes and gratuities

Not included: transportation to/from Milwaukee, local transportation in Milwaukee, parking fees



For further information and to reserve a space on this trip, contact the Membership Department at 773-834-9777 or fill out attached form.